



ZENITH CUTTER

A FISHER BARTON COMPANY

"Knives With Endurance"®

5200 Zenith Parkway • Loves Park, IL 61111

Tel: 815.282.5200 • Fax: 815.282.5232 • www.zenithcutter.com

SHREDDER KNIFE IDENTIFICATION

QUOTE NUMBER: _____

MACHINE NAME: _____

MACHINE MODEL: _____

OEM# (if available): _____

1.) Note any part numbers or markings on the knife:

Please complete the following information:

A. Length: _____

B. Width: _____

C. Thickness: _____

2.) Hole/Thread information:

Type of holes (counterbored or tapped): _____

D. Thread size: _____

E. Hole diameter (if counterbored): _____

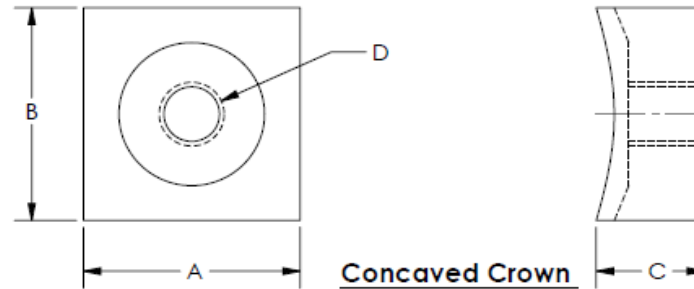
F. Counterbore depth: _____

3) Please circle or write which option applies:

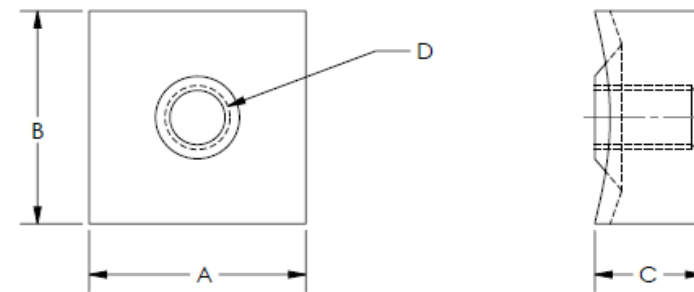
(Options shown at right) _____

4) Material being processed: _____

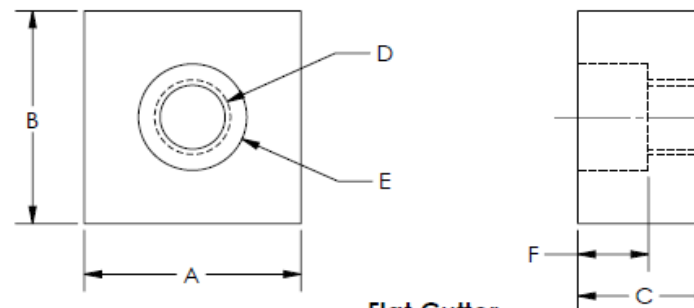
5) Note any special features:



Concaved Crown



Raised Crown



Flat Cutter