

CIRCULAR SLITTER IDENTIFICATION



WHEN IT'S MAKE OR BREAK.™

MACHINE NAME: _____

MACHINE MODEL: _____

OEM# (if available): _____

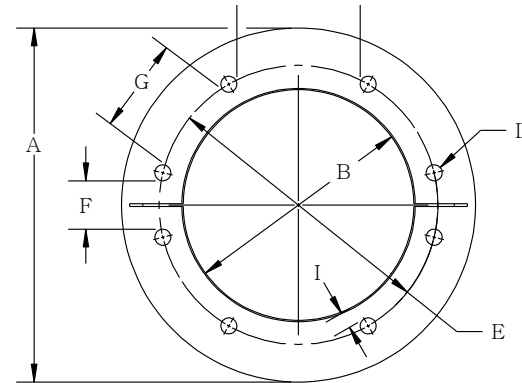
5200 Zenith Parkway • Loves Park, IL 61111
Tel: (800) 223-5202 • www.zenithcutter.com

1.) Note any part numbers or markings on the blade:

2.) Is blade solid or in halves?

Please complete the following information:

- A. _____
- B. _____
- C. _____



PLEASE SKETCH OR NOTE ANY ADDITION FEATURES
BEVEL TYPES

3.) Hole information:

Quantity of holes? _____

Are they through holes or tapped _____

- D. _____
- E. _____
- F. _____
- G. _____
- H. _____
- I. _____

4.) Bevel type _____

- J. _____
- K. _____
- L. _____
- M. _____
- N. _____
- P. _____

<p>FINISH SHARP</p> <p>SQUARE EDGE</p>	<p>SINGLE BEVEL BLUNT</p>	<p>SHARP</p> <p>SINGLE BEVEL SHARP</p>	<p>COMPOUND SINGLE BEVEL</p>
<p>SINGLE BEVEL WITH GROOVE</p>	<p>DOUBLE BEVEL BLUNT</p>	<p>SHARP</p> <p>DOUBLE BEVEL SHARP</p>	<p>COMPOUND DOUBLE BEVEL</p>

How to use this form:

Please fill out this form to help us identify your circular slitter knife. Once completed, please send this form to sales@zenithcutter.com or to your Zenith Cutter sales representative.