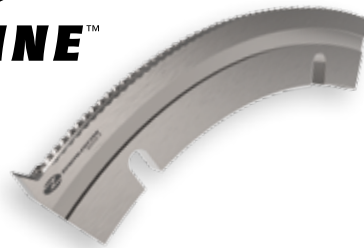


50 S&S[®]

REPLACEMENT KNIVES & ACCESSORIES

FEATURING 
WOLVERINE[™]



ZENITH CUTTER
A FISHER BARTON COMPANY

*S & S is a registered trademark of Corrugated Gear.

50 S&S® REPLACEMENT KNIVES

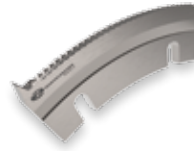


*FEATURING WOLVERINE

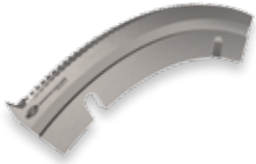
STANDARD MALE SLOT KNIVES



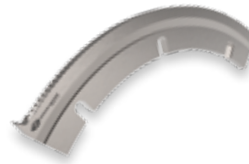
3 INCH		
PART #	M5653-S	M5663-S
DESCRIPTION	SERRATED MALE WITH TIP	SERRATED MALE WITHOUT TIP



6 INCH	
M5656-S	M5666-S
SERRATED MALE WITH TIP	SERRATED MALE WITHOUT TIP



9 INCH		
PART #	M5659-S	M5699-S
DESCRIPTION	SERRATED MALE WITH TIP	SERRATED MALE WITHOUT TIP



12 INCH	
M56513-S	M56512-S
MALE WITH TIP	MALE WITHOUT TIP

FEMALE SLOT KNIVES



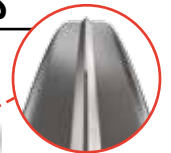
PART #	F424	F787	F459
DIMENSIONS	10.812 X 7.751 X .313	10.812 X 7.751 X .094	9.125 X 7.751 X 0.377
CATEGORY	STANDARD	THIN RING	SPACER

TRIM KNIVES



PART #	G679	P416	G997
DESCRIPTION	PERFORMANCE SLITTER	UPPER SLITTER	LOWER SLITTER
DIMENSIONS	17.375 X 13.626 X .250	17.25 X 13.625 X .250	10.813 X 7.75 X .313

SCORE RINGS



CONTACT ZENITH SALES
"A" PROFILE



FEATURING...

WOLVERINE™



Wolverine™ is the newest male slot knife from Zenith Cutter, featuring newly-engineered serrations designed specifically for over-recycled corrugate. Based on initial testing, the patent-pending Wolverine cuts better than any other male slot knife on the planet — meaning cleaner cuts and less mess.

▶ GLUEHEAD MALE SLOT KNIVES



12 INCH - SERRATED

PART #	M56519-S	M56518-S
DESCRIPTION	SERRATED MALE WITH TIP EXTENDED SLOT AND BEVEL	SERRATED MALE WITHOUT TIP, EXTENDED SLOTS AND BEVEL

▶ TAB KNIVES



1-5/8 INCH FOR URETHANE ANVIL

PART #	P1886	P1887	P1888	P1889
DESCRIPTION	B FLUTE TAB KNIFE	C FLUTE TAB KNIFE	BC FLUTE TAB KNIFE	AC FLUTETAB KNIFE
DIMENSIONS	1-5/8 X .813 X .060	1-5/8 X .875 X .060	1-5/8 X .970 X .060	1-5/8 X 1.05 X .060

2 INCH FOR URETHANE ANVIL

PART #	P531	P532	P533	P534-AC
DESCRIPTION	B FLUTE TAB KNIFE	C FLUTE TAB KNIFE	BC FLUTE TAB KNIFE	AC FLUTE TAB KNIFE
DIMENSIONS	2 X .813 X .060	2 X .875 X .060	2 X .970 X .060	2 X 1.05 X .060

▶ STRIPPER / CLEANOUT



PART #	ZLR01486-03_8
REFERENCE SPACER	F459

▶ DOCTOR BLADES



PART #	DBU0815
DIMENSIONS	1.5" X .080" X 100'
MATERIAL	UHMW

▶ HARDWARE



1/2 INCH

PART #	1_2-31_2TB	1_2-11_2TB	1_2FNHEAVY
DESCRIPTION	1/2 X 3-1/2 T BOLT SQUARE HEAD	1/2 X 1-1/2 T BOLT SQUARE HEAD	1/2 FLANGE NUT (HEAVY DUTY)
DIMENSIONS	3.5 X 1/2	1.5 X 1/2	

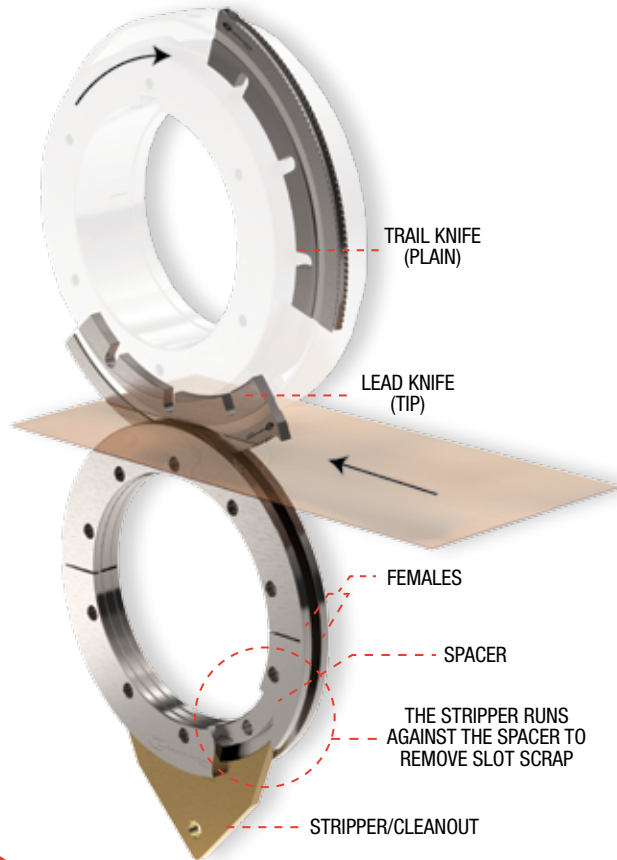
3/8 INCH

PART #	3_8-21_2TB	3_8-11_8TB	3_8FNHEAVY
DESCRIPTION	3/8 X 2-1/2 T BOLT SQUARE HEAD	3/8 X 1-1/8 T BOLT SQUARE HEAD	3/8 FLANGE NUT (HEAVY DUTY)
DIMENSIONS	2.5 X 3/8	1.125 X 3/8	

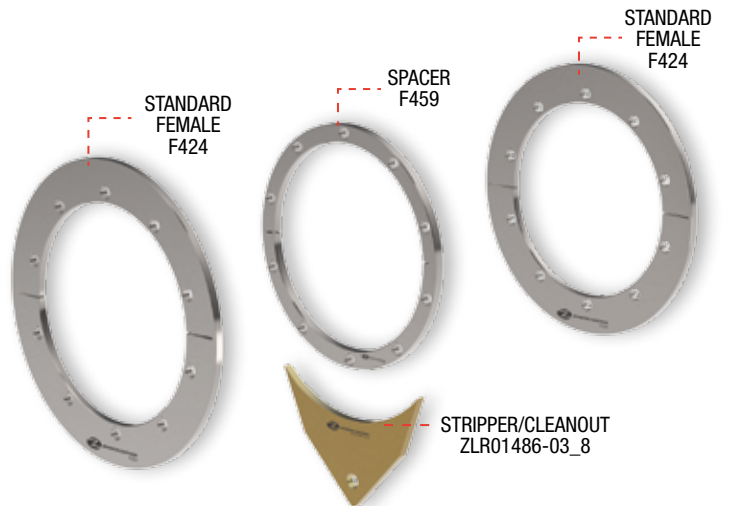
FOR A FULL LIST OF ZENITH PRODUCTS, CALL 800-223-5202

50 S&S® REPLACEMENT KNIVES

▶ MALE ASSEMBLY



▶ STANDARD FEMALE ASSEMBLY



BEST IN CLASS. GUARANTEED.

We guarantee our knives will perform, as well or, better than the rest. Why? Because making knives is what we do and we do it better than anyone else. Through extensive engineering and research, we make the best knives on the planet.



ZENITH CUTTER
A FISHER BARTON COMPANY

WHEN IT'S MAKE OR BREAK.™

5200 Zenith Parkway
Loves Park, IL 61111

815.282.5200
800.223.5202 (US)
800.228.5206 (Canada)

zenithcutter.com

sales@zenithcutter.com