

# 50 LANGSTON®

REPLACEMENT KNIVES & ACCESSORIES

FEATURING   
**WOLVERINE™**



*Best in Class.*

**KNIFE  
GUARANTEE**



**ZENITH CUTTER**

A FISHER BARTON COMPANY

# 50 LANGSTON® REPLACEMENT KNIVES



## STANDARD MALE SLOT KNIVES FOR 3/8 INCH SLOTTING

\*FEATURING WOLVERINE



2 INCH				
PART #	M2371-S	M2371	M231154-S	M231154
DESCRIPTION	SERRATED MALE WITH TIP	MALE WITH TIP	SERRATED MALE WITHOUT TIP	MALE WITHOUT TIP



3 INCH				
PART #	M231136-S	M231136	M231155-S	M231155
DESCRIPTION	SERRATED MALE WITH TIP	MALE WITH TIP	SERRATED MALE WITHOUT TIP	MALE WITHOUT TIP



4 INCH				
PART #	M23528-S	M23528	M2345-S	M2345
DESCRIPTION	SERRATED MALE WITH TIP	MALE WITH TIP	SERRATED MALE WITHOUT TIP	MALE WITHOUT TIP



5 INCH				
PART #	M2378-S	M2378	M231156-S	M231156
DESCRIPTION	SERRATED MALE WITH TIP	MALE WITH TIP	SERRATED MALE WITHOUT TIP	MALE WITHOUT TIP



6 INCH				
PART #	M2377-S	M2377	M231157-S	M231157
DESCRIPTION	SERRATED MALE WITH TIP	MALE WITH TIP	SERRATED MALE WITHOUT TIP	MALE WITHOUT TIP



8 INCH				
PART #	M2398-S	M2398	M2348-S	M2348
DESCRIPTION	SERRATED MALE WITH TIP	MALE WITH TIP	SERRATED MALE WITHOUT TIP	MALE WITHOUT TIP



10 INCH				
PART #	M2362-S	M2362	M2350-S	M2350
DESCRIPTION	SERRATED MALE WITH TIP	MALE WITH TIP	SERRATED MALE WITHOUT TIP	MALE WITHOUT TIP



12 INCH				
PART #	M23582-S	M23582	M23591-S	M23591
DESCRIPTION	SERRATED MALE WITH TIP	MALE WITH TIP	SERRATED MALE WITHOUT TIP	MALE WITHOUT TIP



## GLUEHEAD MALE SLOT KNIVES FOR 3/8 INCH SLOTTING

*\*FEATURING WOLVERINE*



### 7 INCH

PART #	M231237-S	M231237	M231232-S	M231232
DESCRIPTION	SERRATED MALE WITH TIP, ELONGATED SLOT	MALE WITH TIP, ELONGATED SLOT	SERRATED MALE WITHOUT TIP, ELONGATED SLOT	MALE WITHOUT TIP, ELONGATED SLOT



### 10 INCH

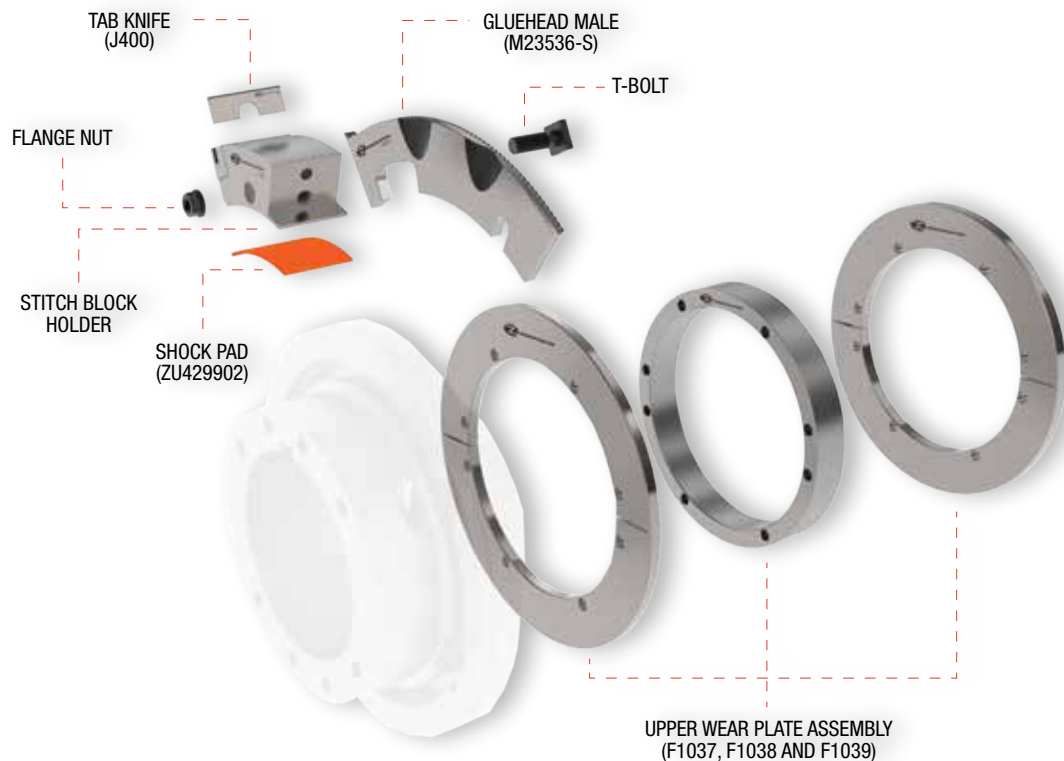
PART #	M23536-S	M23536	M23537-S	M23537
DESCRIPTION	SERRATED MALE WITH TIP, BEVEL AND EXTENDED SLOT	MALE WITH TIP, BEVEL AND EXTENDED SLOT	SERRATED MALE WITHOUT TIP, BEVEL AND EXTENDED SLOT	MALE WITHOUT TIP, BEVEL AND EXTENDED SLOT



### 13 INCH

PART #	M231243-S	M231243
DESCRIPTION	SERRATED DINO TIPPED	DINO TIPPED MALE

## MALE GLUEHEAD ASSEMBLY



## STITCH BLOCK HOLDERS



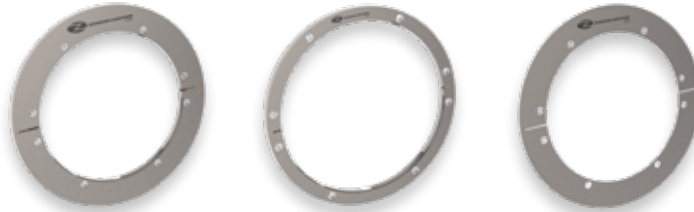
### STEEL ANVIL SYSTEM

PART #	L31	L32
DESCRIPTION	TRAIL TAB BLOCK ASSEMBLY	LEAD TAB BLOCK ASSEMBLY

**FOR A FULL LIST OF ZENITH PRODUCTS, CALL 800-223-5202**

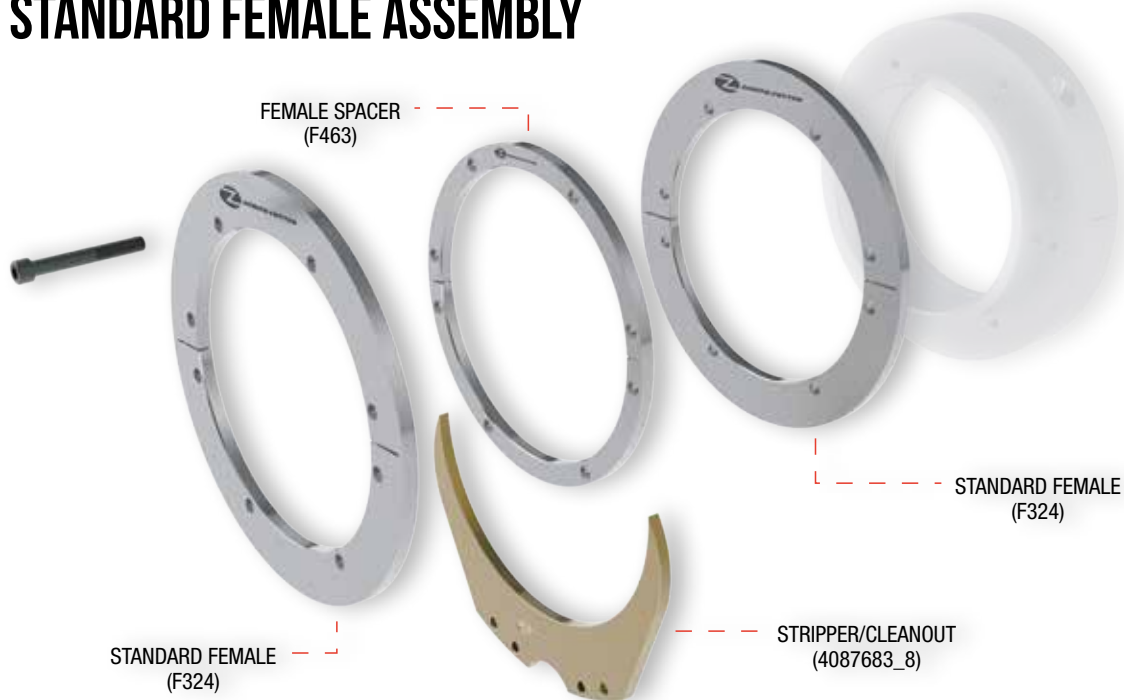
# 50 LANGSTON® REPLACEMENT KNIVES

## FEMALE SLOT KNIVES



PART #	F324	F463	F926
OEM #	254479B		415641
DIMENSIONS	10.615 X 7.876 X .375	9.125 X 7.876 X .377	10.615 X 7.876 X .094
CATEGORY	STANDARD	SPACER	THIN/PINCH RING

## STANDARD FEMALE ASSEMBLY



## ANVILS



PART #	A106	A85
DESCRIPTION	2" TAB ANVIL	1 5/8" TAB ANVIL
DIMENSIONS	10.615 X 7.876 X 2	10.615 X 7.876 X 1.625

## TRIM KNIVES



PART #	G564	G884
DESCRIPTION	UPPER TRIM KNIFE	THREADED LOWER TRIM KNIFE
DIMENSIONS	16.25 X 13 X .438	11 X 7.876 X .375

## TAB KNIVES



### 1-5/8 INCH FOR URETHANE ANVIL

PART #	P1886	P1887	P1888	P1889
DESCRIPTION	B FLUTE TAB KNIFE	C FLUTE TAB KNIFE	BC FLUTE TAB KNIFE	AC FLUTETAB KNIFE
DIMENSIONS	1-5/8 X .813 X .060	1-5/8 X .875 X .060	1-5/8 X .97 X .060	1-5/8 X 1.05 X .060

### 2 INCH FOR URETHANE ANVIL

PART #	P531	P532	P533	P534-AC
DESCRIPTION	B FLUTE TAB KNIFE	C FLUTE TAB KNIFE	BC FLUTE TAB KNIFE	AC FLUTE TAB KNIFE
DIMENSIONS	2 X .813 X .060	2 X .875 X .060	2 X .97 X .060	2 X 1.05 X .060

### 2 INCH FOR STEEL ANVIL



PART #	J158	J397	J400	ZU429902
OEM #	412668-2	412668-1	412668-5	429902
DESCRIPTION	C FLUTE TAB KNIFE	B FLUTE TAB KNIFE	DOUBLE WALL TAB KNIFE, BC FLUTE	SHOCK PAD
DIMENSIONS	2 X .625 X .120	2 X .575 X .120	2 X .71 X .120	3 X 1.875 X .125



FEATURING...

# WOLVERINE™



Wolverine™ is the newest male slot knife from Zenith Cutter, featuring newly-engineered serrations designed specifically for over-recycled corrugate. Based on initial testing, the patent-pending Wolverine cuts better than any other male slot knife on the planet — meaning cleaner cuts and less mess.

FOR A FULL LIST OF ZENITH PRODUCTS, CALL 800-223-5202

# 50 LANGSTON® REPLACEMENT KNIVES

## WEAR PLATES



PART #	F1037	F1038	F1039	F899
OEM #	256760	256760	256760	256188
DESCRIPTION	UPPER WEAR PLATE 3 PIECE ASSEMBLY			LOWER WEAR PLATE
DIMENSIONS	12.25 X 9 X .565	12.25 X 9 X .368	10.25 X 9 X 1.192	10.125 X 7.876 X .312

## STRIPPER/CLEANOUT



PART #	4087683_8	4110543_8	4110553_8
DESCRIPTION	6.625 X 10 X .36	2.5 X 3.486 X .360	4.125 X 10.322 X .360

## FEED WHEEL



PART #	ZU10460A
DESCRIPTION	3.686 X 3.18 X 1

## HARDWARE



### 1/2 INCH

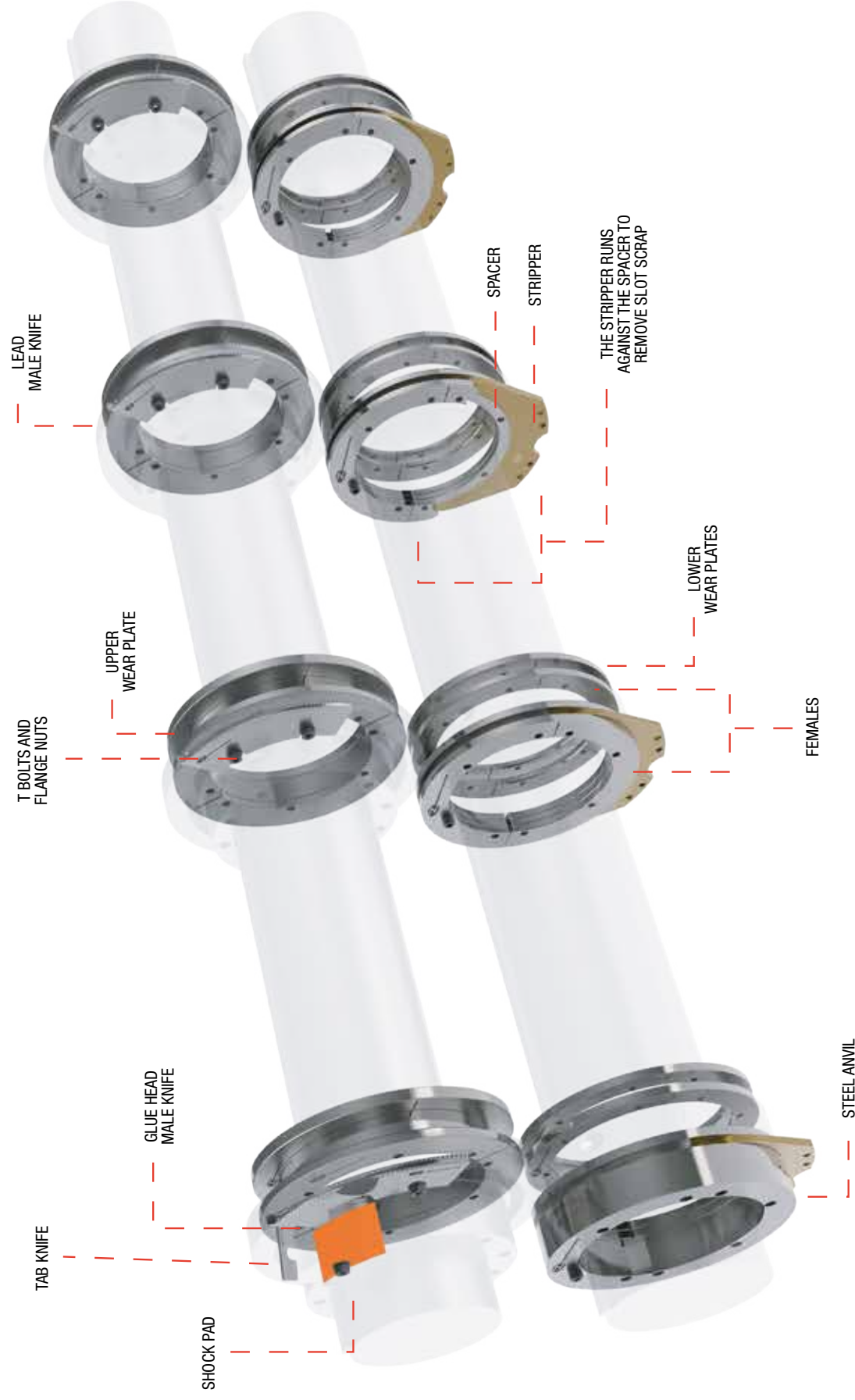
PART #	1_2-31_2TB	1_2-11_2TB	1_2FNHEAVY
DESCRIPTION	1/2 X 3-1/2 T BOLT SQUARE HEAD	1/2 X 1-1/2 T BOLT SQUARE HEAD	1/2 FLANGE NUT (HEAVY DUTY)
DIMENSIONS	3.5 X 1/2	1.5 X 1/2	

### 3/8 INCH

PART #	3_8-21_2TB	3_8-11_8TB	3_8FNHEAVY
DESCRIPTION	3/8 X 2-1/2 T BOLT SQUARE HEAD	3/8 X 1-1/8 T BOLT SQUARE HEAD	3/8 FLANGE NUT (HEAVY DUTY)
DIMENSIONS	2.5 X 3/8	1.125 X 3/8	

# 50 LANGSTON®

## UPPER & LOWER SHAFT ASSEMBLY





# 50 LANGSTON®

## WHEN IT'S MAKE OR BREAK.™



### BEST IN CLASS. GUARANTEED.

We guarantee our knives will perform, as well or, better than the rest.  
Why? Because making knives is what we do and we do it better than anyone else. Through extensive engineering and research, we make the best knives on the planet.



5200 Zenith Parkway  
Loves Park, IL 61111



815.282.5200  
800.223.5202 (US)  
800.228.5206 (Canada)



[zenithcutter.com](http://zenithcutter.com)



[sales@zenithcutter.com](mailto:sales@zenithcutter.com)



**ZENITH CUTTER**  
A FISHER BARTON COMPANY



**SMITHERS**  
QUALITY ASSESSMENTS